



REN MORO I PARKEN



RULES

THIS RULE BOOK CONTAINS RULES FOR ENVIRONMENTAL GUARDIANS OF ALL AGES. REMEMBER, THE NEXT TIME YOU VISIT THE PARK, TO FOLLOW THE RULES THAT YOU BECOME FAMILIAR WITH IN THE GAME, SO THAT YOU CAN BE A REAL-LIFE ENVIRONMENTAL GUARDIAN! IT'S GREAT THAT YOU WANT TO HELP ME KEEP A CLEAN AND TIDY PARK FOR EVERYONE WHO VISITS!



YOUR FRIEND
FOFFA

BEFORE THE GAME

- Place the game board in the middle of the table.
- Place a trash chip on each space marked with an "F" on the game board. The chip should be placed with the trash side up, so that the points on the back cannot be seen.
- Each player chooses a color and places their chip on the Start space.



HOW TO PLAY

The point of the game is to help Foffa collect trash from the park and throw it in the correct garbage bins. The trash is scattered all around the park and comes in three colors. Black for general waste, purple for plastic, and green for bottles.



There are also garbage bins placed around the park. These are the same color as the trash that should be thrown into them.

The arrows on the game board indicate where one must go to reach the garbage bins. When picking up a waste chip, take the chip and place it in front of you.



When you have visited and thrown a piece of trash in the correct waste bin, turn the trash chip over, so that it lies with the point side up.

If, while walking around the park, you land on the same space as another player, you can steal a trash chip from that player. You can only steal one chip and you can only steal chips that are not turned with the point side up.

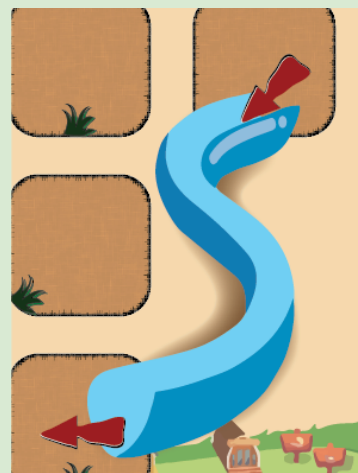
The youngest player begins. They get the dice and roll. Then they move the number of spaces the dice show in whichever direction they wish. Remember that you can move in any direction you want, but you cannot go back and forth on the same turn.

Players do not have to move the number of spaces that the dice show. You can choose to stop earlier. If you stop, you cannot move further after picking up trash or throwing something in a garbage bin.

In Foldvik family park, there is also Tøffen Train. In the Foldvik game, players can ride Tøffen Train to move around the park more quickly. If a player passes a space where the train tracks start (indicated by arrows), they can choose to move to where the track ends. This is optional. Moving from start to stop counts as one move. You can then move further after the train ride.



There are also water slides in Foldvik family park. If you land on a space that has an arrow into a water slide, you slide down to the end of the water slide. You can also choose to stop earlier so that you take the water slide. You cannot move further afterward.



WINNER OF THE GAME

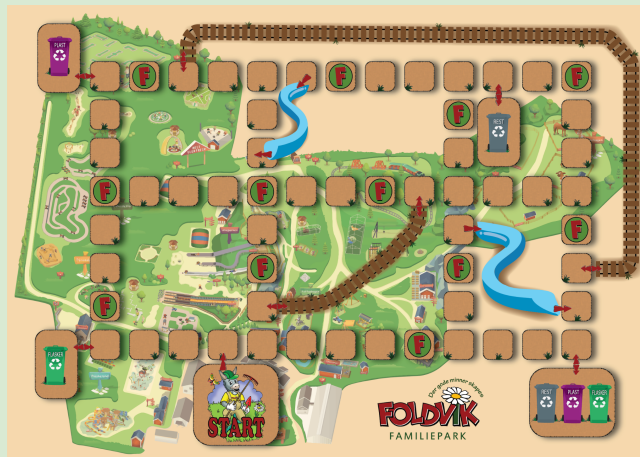
When all the trash has been picked up and thrown in the correct waste bin, the game is over.

All players count up the point chips they have collected.

The player with the most points is the winner of the game.

GAME CONTENTS

Game board



15 trash chips



4 meeples



1 dice

